



START

RIVERSIDE COUNTY CAREER GUIDE FOR ENVIRONMENTAL HEALTH SPECIALISTS

www.rivcoeh.org



YouTube



What happens if
the gas station
tank leaks?

Is this pool
water safe to
swim in?

Is the water in
this well safe
to drink?

How do I know
this food is safe
to eat?

What does my
mechanic do with
my car's used oil?

How do I know if the
needles at my tattoo
shop are clean?

The preventive actions of Environmental Health Specialists promote clean and safe communities. EHS inspect:

Underground storage tanks

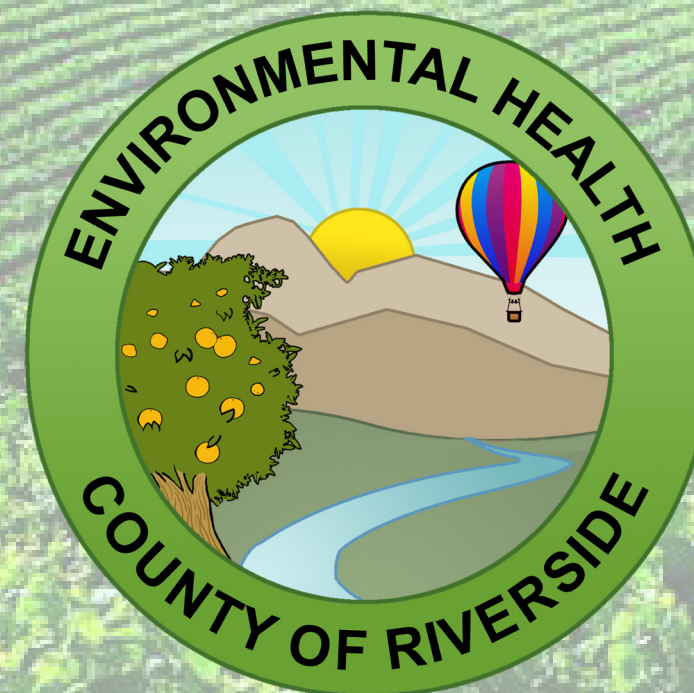
Water wells

Public swimming pools

Places with hazardous materials, such as car repair shops

Body art facilities

Food facilities, such as grocery stores and restaurants



Protecting People and the Environment

The mission of the Department of Environmental Health is to enhance the quality of life in Riverside County by implementation of effective and efficient environmental health programs to protect public health, safety, and the environment.

Environmental Health Specialists (EHS)

The primary goal of an EHS is to gain compliance with laws and regulations that protect the residents and visitors of Riverside County. Although Environmental Health is a regulatory agency, EHS strive to work with our clients by utilizing education and outreach as the primary tool along with listening to them about their business needs and concerns. Treating each other as partners leads to increased compliance. When needed, EHS will increase enforcement actions.

Riverside County EHSs work in 1 of 5 areas, each covering various programs

District Environmental Services

Programs: Retail Food, Public Pool Safety, Retail Tobacco Permitting

- Inspections of permitted food facilities (restaurants, markets, bars, public school cafeterias, food vehicles, vending machines), temporary public events, swap meets, public swimming pools and spas (apartments, schools, health clubs, water parks), summer camps, mobilehome parks, and tobacco retailers.
- Plan approval and inspection of new and remodeled food and pool facilities.
- Enforcement may include: Impound unsafe food or equipment, issue citations, place liens on properties and administer facility closures when necessary.
- Conduct Tobacco Decoy Operations.

Hazardous Materials Management

Programs: Underground Storage Tanks (USTs), Hazardous Materials Business Plan (Disclosure/Handler), Cal ARP, Aboveground Petroleum Storage (APSA), Hazardous Waste Generator, Waste Treatment/Tiered Permitting, and Emergency Response

- Inspections of hazardous waste generators, hazardous material handlers, USTs, and aboveground petroleum storage facilities.
- Plan approval and inspection of UST systems.
- Respond to Hazardous Materials emergencies on a 24 hour basis.
- Enforcement may include working with the Office of the District Attorney on prosecution of entities that violate laws set forth in the California Health & Safety Code, in conjunction with the Environmental Crimes Task Force.

Local Enforcement Agency

Programs: Body Art, Medical Waste, Solid Waste and Liquid Waste Haulers

- Inspections of permitted medical waste facilities, liquid waste pumper trucks, solid waste facilities, and body art facilities.
- Review and approve plans for mobile and fixed body art facilities.
- Review and approve medical waste management plans.
- Review and approve solid waste permitting and operational documents.

Land Use

Programs: Water systems, Planning Case Review, Septic Systems

- Plan approval for septic system installation and repair.
- Inspect and review testing of small water systems up to 199 connections.
- Oversee construction and demolition of individual and community water wells.
- Certification of backflow device testers.
- Review planning cases for compliance with water and septic/sewer standards.

Environmental Cleanup Program

Programs: Site Cleanup, Childhood Lead Poisoning Prevention Program, Monitoring Wells

- Oversee sites contaminated with petroleum from leaking underground storage tanks. Monitor clean-up efforts at contaminated sites.
- Review environmental assessment documents relating to site conditions at proposed commercial and residential developments.
- Review and approve plans for the installation and demolition of monitoring wells.
- Work as part of a team to investigate homes of children who have an elevated blood lead level to determine the cause of the poisoning and to ensure that all identified lead hazards are reduced or eliminated.
- Review and approve workplans for contaminated site clean-ups. Monitor clean-up efforts at contaminated sites.

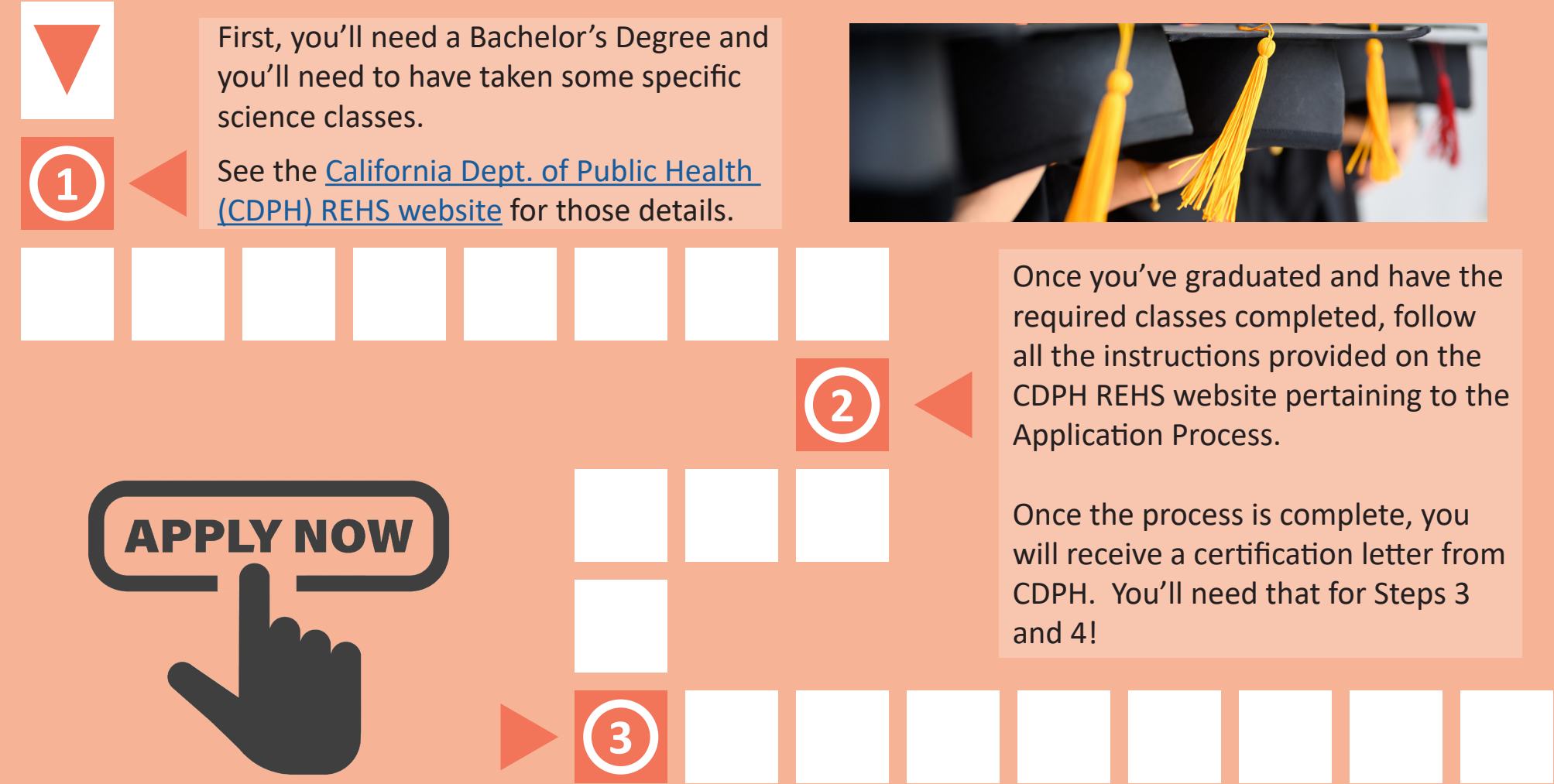
In addition to the activities listed, all Environmental Health Specialists also:

- Investigate complaints regarding permitted and unpermitted facilities, food or water borne illness, vector problems and residential sewage/trash issues.
- Prepare and participate in legal proceedings such as office hearings and court related actions.

Interested in becoming an EHS?

(Here's a hint, search online for "CDPH REHS" and just follow the instructions under "Application Process." That covers steps 1 and 2 below!)

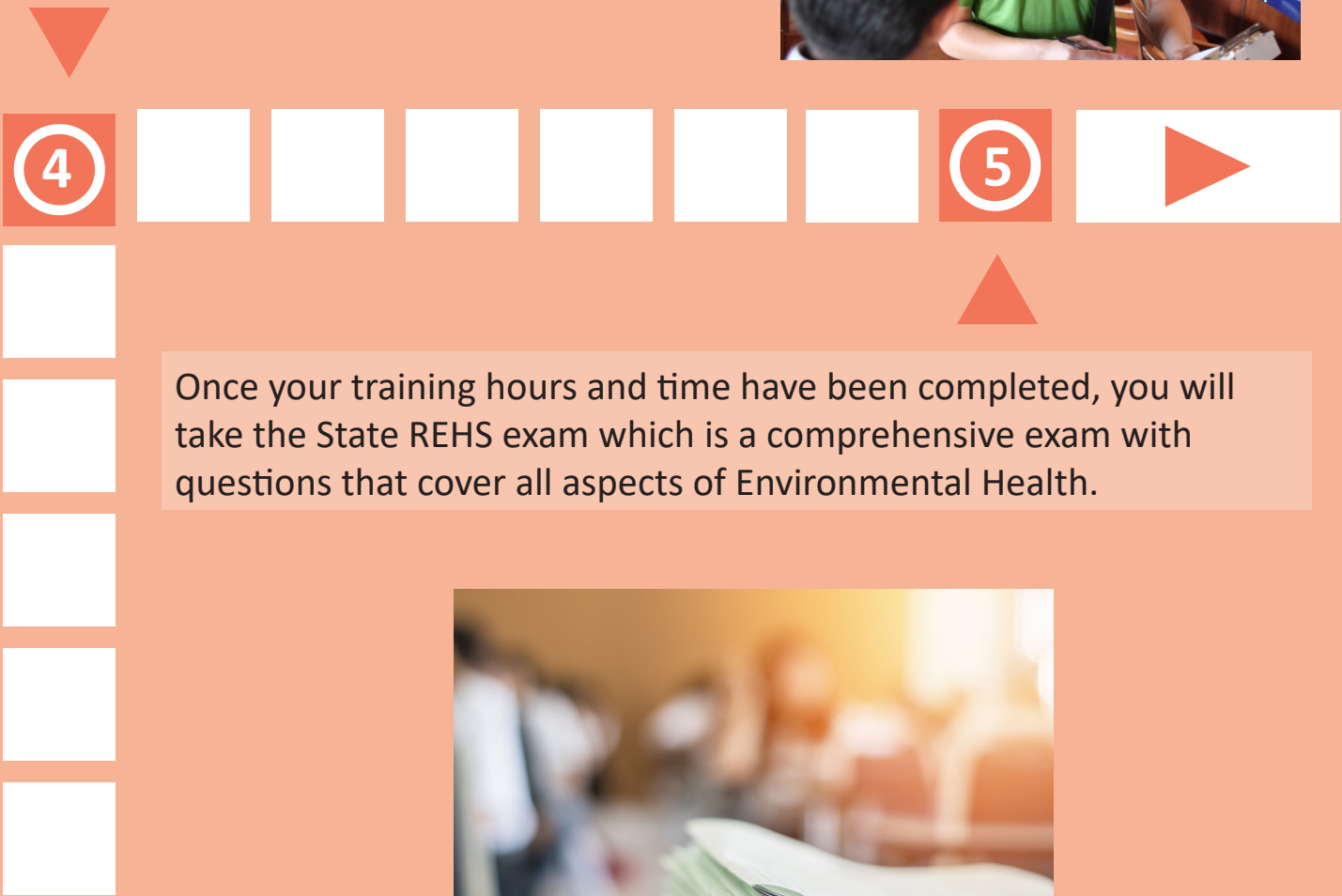
An Environmental Health Specialist is a professional position and is governed by the California Department of Public Health (CDPH). As such, there are pre-qualifications, a licensing exam, and ongoing education requirements.



Now you can apply to Riverside County! Go to governmentjobs.com/careers/riverside. Search for "Environmental Health Specialist." Make sure you attach that CDPH letter from Step 2!

You're hired!

Your letter from CDPH (Step 2) will detail the hours of training and the minimum time you will be required to work before being allowed to take the state REHS exam. On the job, you will be provided time for training to accomplish this.



THE REGISTERED ENVIRONMENTAL HEALTH SPECIALIST EXAM

The REHS Exam covers information from all areas of Environmental Health that fall under the jurisdiction of an EHS. When you receive your certification letter from the state, you will notice that it has some specific requirements noted on it. These requirements are a combination of months of experience along with hours of training. Once you pass the REHS exam, you will be considered a Registered Environmental Health Specialist, or REHS. It is mandatory that each applicant pass the exam and become registered within 36 months of being hired by an Environmental Health Department.

Salary

To view the salary range, go to <https://www.governmentjobs.com/careers/riverside/classspecs> and look for Environmental Health Specialist.

Flexible Schedules

You will have the option to work a variety of different weekly schedules, for example a “4/10” in which you work four (4) 10-hour days per week, a “9/80” in which you work 9 days in a 2-week period, or the more traditional “5/40” in which you work five (5) 8-hour days per week. Start times may vary.

Mileage

Most of the travel you will do as an EHS will be with a county-owned vehicle. When that is not feasible, you will be required to use your personal vehicle but will receive reimbursement at the Federal Government mileage reimbursement rate.

Medical/Dental/Vision

You will have your choice of several medical, dental, and vision plans.

Vacation/Sick Time

Throughout your time with Riverside County, you will receive 4 hours of sick time per 2-week pay period with unlimited accrual.

During your first 3 years, you will receive 2 weeks of vacation per year, years 4-9 you will receive 3 weeks of vacation per year, and at 10 years and above you will receive 4 weeks of vacation per year.



Holidays

You will receive 12 paid holidays per year.

Retirement

Employees are part of the California Public Employee Retirement System, or CalPERS. Some money is taken from your paycheck as a pre-tax deduction and paid into CalPERS. Additionally, the county provides money to CalPERS as well. Upon your retirement, you will receive a pre-defined pension. Contact the Riverside County Human Resources Dept. for the current formula/rate and minimum retirement age or go to <https://benefits.rc-hr.com/RetirementPlans/CalPERS.aspx>. The amount received is based on the employee’s age, years of service, and pay rate.

Deferred Compensation Plans

You will have the option to contribute to two (2) Deferred Compensation plans (457 plans) to supplement your retirement income.

Titles

- ***EHS I:*** Newly hired without an REHS
- ***EHS II:*** Has had an REHS for less than a year.
- ***EHS III:*** Has had an REHS for at least a year and has demonstrated a minimum of satisfactory performance evaluations.

Promotional Opportunities

- ***EHS IV:*** Senior level or lead specialist
- ***Supervising EHS***



CAREER GROWTH

DEH offers numerous opportunities for career growth for those who are interested.

EHS I / EHS II / EHS III

These titles are solely based on the REHS status of the EHS.

EHS IV

This is an advanced and lead level classification. An EHS IV has a high degree of technical proficiency and exercises a significant level of initiative and independent judgment. Additionally, the EHS IV assists the program supervisor with the supervision and training of staff.

Supervising EHS

Supervises the DEH program activities in a geographic area or in a specialized, Countywide DEH program.

Program Chief

Plans, organizes, develops, and directs the operation of one or more DEH programs

Deputy Director

Manages, coordinates, plans, controls, and directs the operation of assigned programs.

Assistant Director

Assists in the planning, administration, and operation of DEH.

Director

Plan, organize and administer DEH.

INTERNSHIPS

Riverside County Environmental Health offers unpaid internships to students and graduates who are interested in pursuing a career in the field of Environmental Health. Becoming an Environmental Health intern is a great way to learn more about this exciting profession while working side by side with Specialists. As a Riverside County Environmental Health intern you will participate in a variety of different projects and shadowing inspectors as they conduct numerous types of field inspections.

**For more information about joining our exciting team of
Environmental Health Specialists and what we all do,
go to our website www.rivcoeh.org.**



**4065 County Circle Dr.
Riverside, CA 92503
951-358-5172**