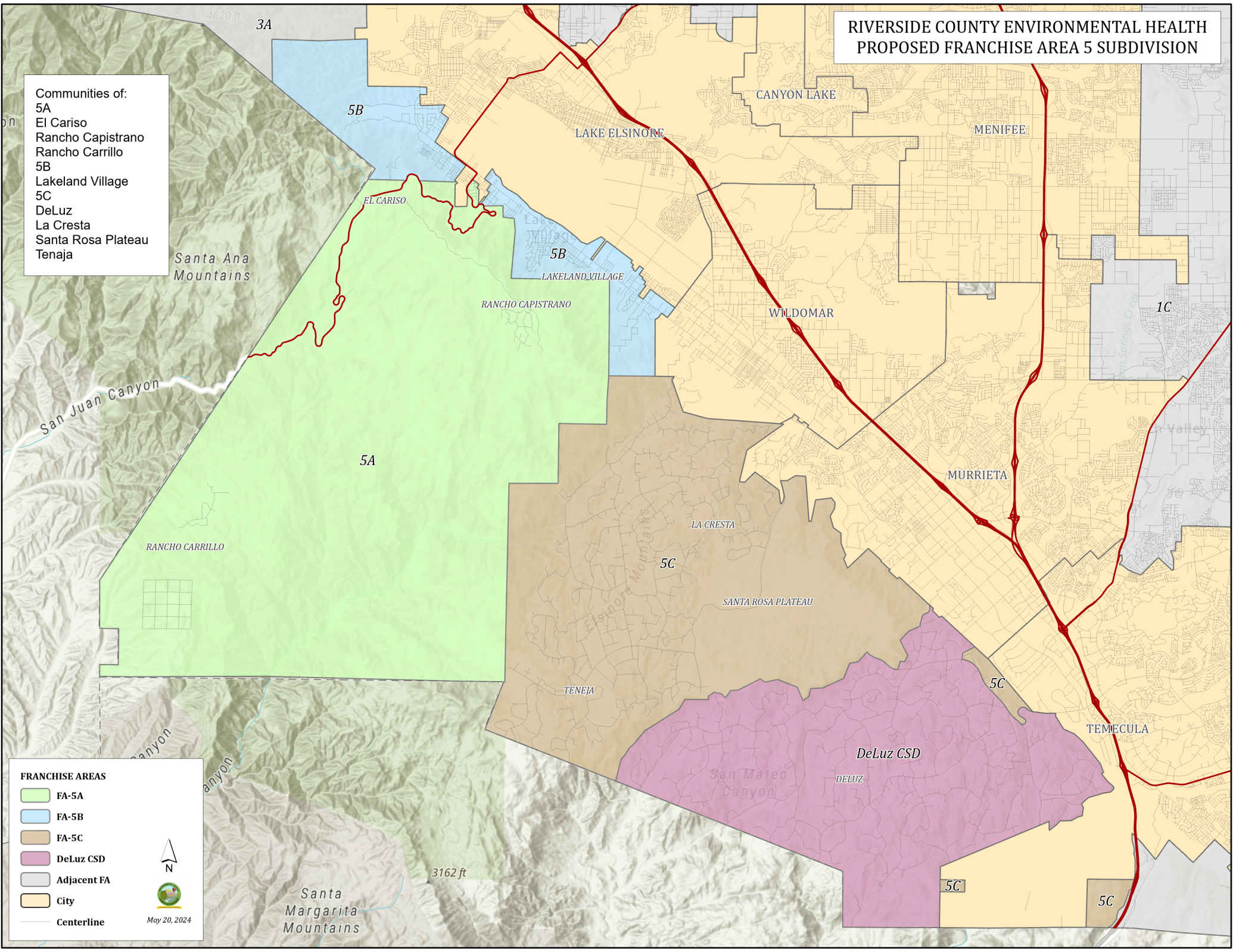


RIVERSIDE COUNTY ENVIRONMENTAL HEALTH PROPOSED FRANCHISE AREA 5 SUBDIVISION

- Communities of:
- 5A
 - El Cariso
 - Rancho Capistrano
 - Rancho Carrillo
 - 5B
 - Lakeland Village
 - 5C
 - DeLuz
 - La Cresta
 - Santa Rosa Plateau
 - Tenaja



FRANCHISE AREAS

- FA-5A
- FA-5B
- FA-5C
- DeLuz CSD
- Adjacent FA
- City
- Centerline

