



Protecting People and the Environment

RIVERSIDE COUNTY



ENVIRONMENTAL HEALTH

888.722.4234 • RIVCOEH.ORG

WE ARE ENVIRONMENTAL HEALTH



The mission of the Department of Environmental Health is to enhance the quality of life in Riverside County by implementation of effective and efficient environmental health programs to protect public health, safety, and the environment.

OUR MANAGEMENT TEAM



Jeff Johnson
Director



Brent Casey
Deputy Director
Environmental
Protection Oversight



Steve Horn
Deputy Director
Business Operation and
Finance



Ken Chandler
Program Chief
District Environmental
Services



Nick Crain
Program Chief
Hazardous Materials
Management



Kristine Kim
Program Chief
Environmental Resources
Management



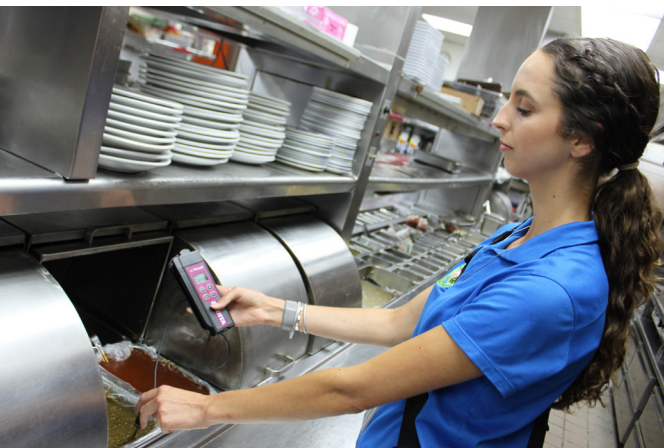
Kristin Lorge
Program Chief
District Environmental
Services



Greg Reyes
Program Chief
Business Operation and
Finance

DISTRICT ENVIRONMENTAL SERVICES (DES) DIVISION

The DES Division is the largest division in the department with employees consisting of professional, technical, and support staff located in six branch offices throughout the county. This Division's goal is to gain compliance with the law by educating the businesses that are regulated. There are seven major programs within the division.



RETAIL FOOD

Routine inspections and complaint investigations, including foodborne illness complaints, are conducted to ensure safe food handling practices, proper sanitation, and compliance with California Health and Safety Code. The program inspects approximately 9,500 retail food facilities in the unincorporated areas and incorporated cities within the county. These facilities include restaurants, markets, bakeries, public and private schools, food vending vehicles, temporary events (fairs and carnivals), charitable food operations, vending machines, caterers, microenterprise home kitchens and cottage food operations. Additionally, the Food Handler Certification program ensures that food facility employees have adequate knowledge of safe food handling and sanitation procedures and practices.



RECREATIONAL WATER

Routine inspections and complaint investigations are conducted to monitor the safety and proper sanitation of approximately 8,000 public swimming pools, spas, and water features throughout the county. Environmental Health Specialists within this program work to ensure these facilities are safe and clean, and that required lifesaving equipment and enclosures are in place to guard against drownings.

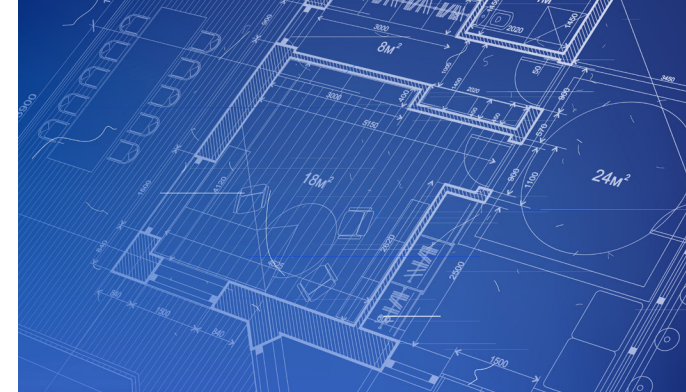
HOUSEHOLD GARBAGE AND SEWAGE

Staff respond to complaints concerning improper disposal or storage of household trash and garbage, and to complaints concerning overflowing sewage from private septic systems in the unincorporated areas of the county and in certain contract cities.



PLAN CHECK

Construction plans of new and remodeled food and recreational water facilities are reviewed for design and construction compliance with state code. Construction and pre-opening inspections are conducted to ensure proper interior finishes and equipment installation. Plans are reviewed for all facilities in unincorporated areas and cities within the county.



ORGANIZED CAMPS/MOBILEHOME PARKS

Routine inspections and complaint investigations are conducted of organized camps and mobilehome parks to ensure compliance with state regulatory requirements for safety, maintenance, use, and occupancy. Organized camps within the county are inspected annually to ensure they are operated in a safe and sanitary manner. Mobilehome parks within unincorporated areas are inspected at a frequency determined by the state.



RETAIL TOBACCO

Retail tobacco sales are monitored and inspected in unincorporated areas as well as most incorporated cities to ensure compliance with state, local, and federal laws. With the help of public volunteers, this program conducts unannounced decoy operations to aid in the prevention of tobacco and tobacco related paraphernalia being sold to individuals under the legal age of 21.



VECTOR CONTROL

This program conducts surveillance of and implements controls for vector-borne diseases. Comprehensive surveillance is conducted for mosquito-borne Encephalitis (West Nile virus) and Plague to determine areas of potential human exposure and appropriate treatment responses. The program inspects commercial poultry ranches to ensure maintenance, sanitation, and fly control in the county's unincorporated areas. Personnel respond to complaints throughout unincorporated areas of the county and within cities with contracts (the department currently has contracts with nine cities and three water districts) to provide identification, consultation and abatement control services. Press releases on the status of vector-borne diseases in the county are released to inform the public.



ENVIRONMENTAL PROTECTION AND OVERSIGHT (EPO) DIVISION

The EPO Division consists of two branches: Environmental Resources Management and Hazardous Materials Management. This Division has regulatory control over hazardous materials, land use, and water system based programs.

ENVIRONMENTAL RESOURCE MANAGEMENT BRANCH (ERM)

LOCAL ENFORCEMENT AGENCY

The Local Enforcement Agency (LEA) seeks to protect the public and environment through the proper management of solid waste by regulating industries that generate, handle, transport, reuse, process, or dispose of solid wastes. The California Department of Resources Recycling and Recovery certifies and designates the county as the LEA to enforce state minimum standards for solid waste handling and disposal under the California Code of Regulations. The following are types of solid waste facilities: active and closed landfills, composting, chip and grind, construction and demolition material recycling and transfer stations.

SOLID WASTE COLLECTION AND REMOVAL

The Solid Waste Collection and Removal program encompasses a wide variety of activities. It oversees the Franchise Waste Hauler Agreements for the unincorporated portions of the county. Under these agreements, staff address roadside dumping complaints, county residents' issues with their trash service and work with the waste haulers to provide safe and efficient trash and recycling services to the unincorporated areas of Riverside County. This program enforces county ordinances that regulate the transportation and land application of manure and Class A biosolids and improper disposal of solid waste.

MEDICAL WASTE

The Medical Waste program regulates the handling, storage, treatment, and disposal of medical waste to ensure that the material is safely and properly disposed of. The program inspects and verifies the medical waste processes at a number of different types of medical waste facilities that include hospitals, clinics, dialysis centers, blood banks, labs, surgery centers, and county forensic centers. Complaints of illegal medical waste disposal are investigated to eliminate improper practices and hazards to the general public.

BODY ART

The Body Art program enforces statewide standards for the safe and sanitary methods of providing tattooing, body piercing, and permanent cosmetics in Riverside County. The program's goal is to protect the practitioner and the client from the transmission of infectious diseases through education and performance of body art facility inspections. The program staff verify that all practitioners are registered, adequately trained, and follow proper body art practices to eliminate the potential for contamination and infection.

LAND USE

This program operates under the Local Agency Management Program (LAMP) and works closely with three State Regional Water Quality Control Boards. The goal of the LAMP is to protect ground water sources and surface water bodies from contamination by providing standards for the proper design, installation and operation of septic systems, and monitoring groundwater quality. The LAMP reports annually to the State on all of its activities. The program also conducts environmental reviews related to water and sewer provisions for parcel maps and tracts, and provides technical expertise to the county's planning department in assessing a project's impact on the environment. In addition, the Land Use program heads up the Backflow Prevention Tester Certification program and is in charge of coordinating and proctoring the annual backflow prevention tester's proficiency exam.

DRINKING WATER

The County is the Local Primacy Agency with delegated authority from the State Public Health Department to regulate and permit public water systems consisting of 199 or fewer service connections. This program conducts inspections and monitors water quality for approximately 250 water systems countywide. It provides annual reporting to the State on all of its activities. This program also oversees drilling and installation of individual wells, agricultural wells, and monitoring wells to ensure compliance with well standards to protect groundwater. Data from monitoring of well water quality is compiled and evaluated to assess groundwater quality for the region.

ENVIRONMENTAL CLEAN UP

The primary goal of the Environmental Cleanup Program (ECP) is to protect public health, water resources, and the environment from releases of contaminants. These contaminants can range from pesticide residue, petroleum products, or industrial wastes. ECP works closely with the Regional Water Quality Control Board and the Department of Toxic Substance Control to provide oversight of assessments and cleanups in accordance with California Health and Safety Code and California Code of Regulations. In addition, ECP staff conduct environmental review for the county Planning Department of proposed development sites to ensure past activities will not pose a threat to human health and safety. This program is also a part of the local detention facility inspection team that provides an annual report to the Executive Office.

CHILDHOOD LEAD POISONING PREVENTION PROGRAM

The objective of the Riverside County Childhood Lead Poisoning Prevention Program (CLPPP) is to protect children from exposure to lead hazards. The program is composed of a team of Public Health Nurses and Environmental Health Specialists who conduct lead-hazard investigations at homes of children who have an elevated blood lead level.



HAZARDOUS MATERIALS MANAGEMENT BRANCH (HMMB)

The HMMB serves as the Certified Unified Program Agency (CUPA) for Riverside County. It is made up of highly trained employees consisting of professional, technical, and support staff located in 4 branch offices throughout the county. This Branch’s goal is to gain compliance with the law by educating the businesses that are regulated, and is also tasked with enforcement activities if needed. There are six major programs within the Branch, as well as an emergency response component.



HAZARDOUS MATERIALS DISCLOSURE

This program was established to prevent or minimize the damage to public health and safety and the environment from a release or threatened release of hazardous materials. A major requirement of the Hazardous Materials Disclosure program is the creation and maintenance of a Hazardous Materials Business Plan. Inspectors review these plans for facility information, chemical inventory, emergency response, and training to help prevent possible chemical releases.

CALIFORNIA ACCIDENTAL RELEASE PREVENTION

This program works with local businesses to reduce the likelihood and severity of consequences due to the release of acutely hazardous materials that could severely impact the community.

HAZARDOUS WASTE GENERATION

This program ensures that chemical waste generated as undesired byproduct are properly managed. Our inspectors look for items that are toxic, reactive, ignitable, or corrosive to help make a waste determination during a facility inspection. Some materials may need to be analyzed or further classified to determine proper disposal.

TIERED PERMITTING

This program evaluates the treatment of hazardous waste and is generally a subset of Hazardous Waste Generation. Inspectors evaluate any facility modifications or changes in the chemical waste stream process that can reduce the hazardous waste quantities or hazards associated with the waste streams.

ABOVEGROUND PETROLEUM STORAGE

Commonly known as the Spill Prevention, Control, and Countermeasure program, this program oversees businesses that have a combined capacity of 1,320 gallons or more of aboveground petroleum storage. The goal of this program is to prevent petroleum discharge into navigable waters of the United States and to protect potable water supplies and sensitive ecosystems.

UNDERGROUND STORAGE TANK

The program ensures that hazardous substances stored underground in newly installed or upgraded underground storage tank (UST) systems meet appropriate construction standards. The program also monitors the removal and proper maintenance of USTs. Facilities are inspected and tested on an annual basis for compliance with state laws. Proof of monitoring and testing is required from the owner or operator in order to obtain an operating permit.

EMERGENCY RESPONSE AND INVESTIGATIONS

Emergency Response is in addition to the six major programs and has a unique arrangement between the Department of Environmental Health and Riverside County Fire Department/Cal Fire. This joint team concept provides for specialization and strengths from both departments in allocating staff 24 hours a day, 7 days a week. The Hazmat team responds to hazardous material incidents including highway accidents, industrial spills, abandoned chemicals, and illicit drug lab cleanups. The Hazmat team, in coordination with the Environmental Crimes Task Force, is involved with the District Attorney’s Office for investigation and prosecution of crimes that involve illegal disposal of hazardous wastes.



BUSINESS OPERATIONS & FINANCE DIVISION

This division provides support for the department, including accounting, revenue tracking and analysis, purchasing, special projects, and budget preparation and monitoring. These services contribute to the overall mission of the department.

ACCOUNTING

The Accounting program oversees department revenue and expenditures, including accounts payable, accounts receivable, and purchasing functions.

INTERNAL SUPPORT SERVICES

The Internal Support Services (ISS) team is responsible for budget preparation and processing permits for facility operators. They are responsible for receiving department supplies and equipment, as well as distributing them to office staff. ISS manages the department’s vehicle fleet service account, communication contracts, and coordinates facility projects to ensure safety compliance. Additionally, ISS coordinates with Riverside County Information Technology (RCIT) regarding computer and communication needs of the Department.

SPECIAL PROJECTS

Special Projects is a unique program consisting of seasoned Environmental Health Specialists charged with training functions, public outreach, policy writing, development of publications, technical support, and departmental program development. This group of experienced and focused specialists contributes to Riverside County’s goal to provide leadership in the field of Environmental Health.

ACCREDITING AGENCY

Riverside County has the distinction of being an Accrediting Agency for Continuing Education which is necessary to maintain state registration for Environmental Health Specialists. Continuing education enriches Department personnel while providing training opportunities ranging from refresher courses to instruction on new regulations and techniques. Riverside County’s training program has been recognized by the California Department of Public Health as a model for other jurisdictions throughout the state!



OFFICE LOCATIONS

PROGRAM LOCATIONS

The Department of Environmental Health strives to provide service throughout the county. Below is a brief summary of all the programs at each of our branch offices. Please note that all offices are able to provide information and services for all programs and offer Food Handler Certification. All of our offices are open Monday through Friday from 7:00 am to 5:30 pm and are closed on county holidays.



- | | | | |
|---|--|---|---|
| 1 Corona
2275 S. Main St, Suite 204
Corona, CA 92882 | 2 Riverside - Main Office
4065 County Circle Dr
Riverside, CA 92503 | 3 Riverside - Downtown
4080 Lemon St, 10th Floor
Riverside, CA 92501 | 4 Murrieta
30135 Technology Dr, Suite 250
Murrieta, CA 92563 |
| 5 Hemet
800 S. Sanderson Ave
Hemet, CA 92545 | 6 Palm Springs
554 S. Paseo Doretea
Palm Springs, CA 92264 | 7 Indio
47-950 Arabia St, Suite A
Indio, CA 92201 | 8 Blythe
260 N. Broadway
Blythe, CA 92225 |

- | | | | |
|--|---|--|---|
| 1 Corona
DES Programs
Supervisor: Kristin Vejar
Phone: (951) 273-9140

HMMB Programs
Supervisor: Gino Monterroso
Phone: (951) 273-9143 | 2 Riverside - Main Office
Accounting
Manager: Vanna Kim
Phone: (951) 358-5172

Internal Support Services
Manager: Gina Fabricante
Phone: (951) 358-5172 | 3 Riverside - Downtown
Land Use Drinking Water
Supervisor: Shantel Bacon
Phone: (951) 955-8980

LEA / Body Art / Med. & Solid Waste
Supervisor: Sandi Salas
Phone: (951) 955-8980 | 4 Murrieta
DES Programs
Supervisor: Derrick Spencer
Phone: (951) 461-0284 |
| 5 Hemet
DES Programs
Supervisor: Sarah Crossman
Phone: (951) 766-2824

Vector Control
Supervisor: Mike Hernandez
Phone: (951) 766-9454

HMMB Programs
Supervisor: Mike Shalhub
Phone: (951) 766-6524

Emergency Response
Supervisor: Lisa Mitchell
Phone: (951) 766-6524 | 6 Palm Springs
DES Programs
Supervisors: Doug Osborn
Dan Blum (Plan Check)
Phone: (760) 320-1048 | 7 Indio
DES Programs
Supervisor: Tyler Skrove
Phone: (760) 863-8287

HMMB Programs
Supervisor: Bob Hunt
Phone: (760) 863-8976

ERM Programs
Supervisor: Mike Mistica
Phone: (760) 863-7570 | 8 Blythe
Food Handler
Certification Program
Supervisor: Tyler Skrove
Phone: (760) 863-8287 |

TDD: (951) 358-5396

After Hours Emergency:
(951) 782-2968

Environmental Crimes
Hotline:
(800) 304-6100



Protecting People and the Environment